

ul. Dziewosłęby 14/1, 04-403 Warszawa
Tel: +48 22 673 55 48
info@stmech.pl www.stmech.pl

HSK E

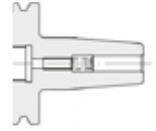


Dati tecnici ed immagini sono indicativi. Mickros si riserva di apportare aggiornamenti in qualsiasi momento e senza obbligo di preavviso.
Technical data and drawings are for information purposes only. Mickros reserves the right to update specs at anytime and without notice.

CTO 4,5° Standard
similar to DIN 69882-8

Mandrino per calettamento termico
Shrink fit chuck
Porte-outils de frettage
Schrumpfutter

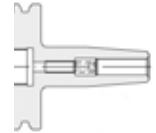
p. 135



CTF 4,5° Slim

Mandrino per calettamento termico di finitura
Finishing shrink fit chuck
Porte outils de frettage pour finissage
Schrumpfutter zum schlichten

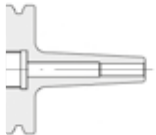
p. 139



CTF 3° Slim
without back up screw

Mandrino per calettamento termico. Ideale per la costruzione di STAMPI e cavità profonde
Shrink fit chuck. Suitable for the MOLD and for deep cavities
Porte outils de frettage. Idéal pour la construction de MOLD et des cavités profondes
Schrumpfutter für tiefe Kavitäten geeignet, speziell für den Gesenk, und Formenbau

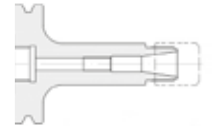
p. 142



ERM - Mini
DIN 6499

Portapinze di precisione ER - Mini DIN 6499
Precision collet chuck ER - Mini DIN 6499
Porte pincés de precision ER - Mini DIN 6499
Präzisions spannzangenfutter ER - Mini DIN 6499

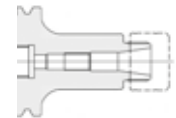
p. 144



ERH
High Performance

Portapinze di precisione ER DIN 6499
Precision collet chuck ER DIN 6499
Porte pincés de precision ER DIN 6499
Präzisions spannzangenfutter ER DIN 6499

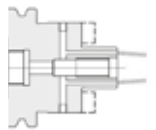
p. 146



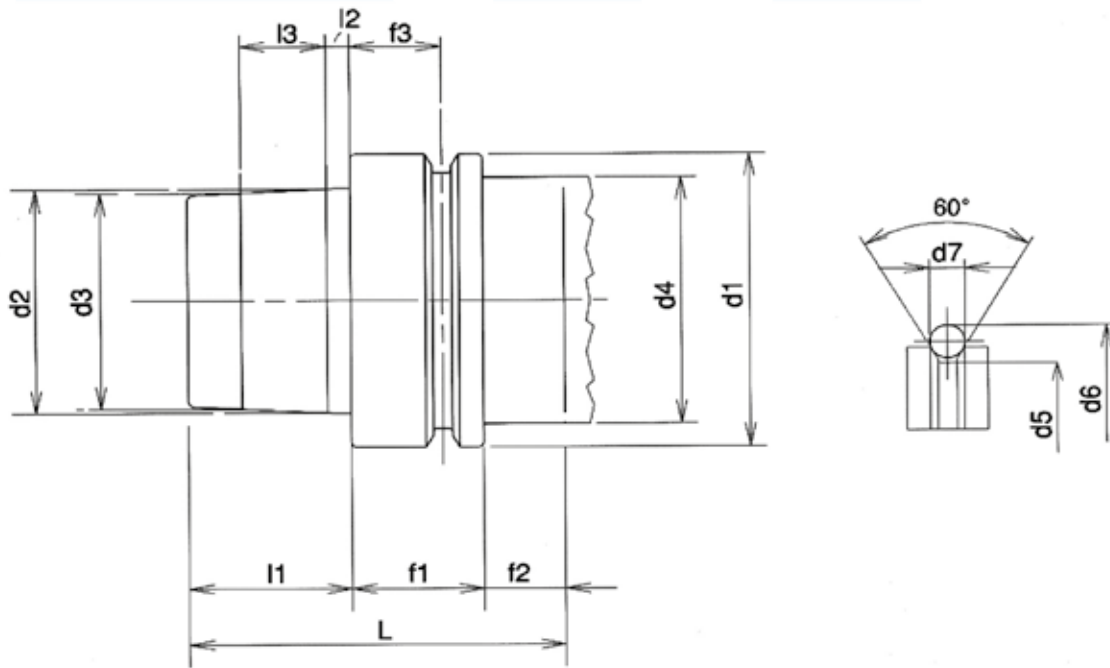
FSW
Cooling Plus
DIN 6357 B

Portafresa a spianare con trascinatore fisso - con canali di lubrificazione
Face mill arbor with coolant bores
Porte-fraises à surfacer avec conduits d'arrosage
Messerkopf- aufnahme mit Kühlmittelbohrun

p. 148

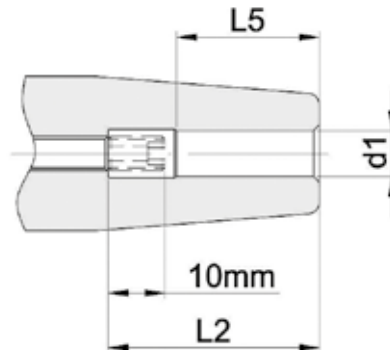



DIN 69893 - HSK E



	HSK 32	HSK 40	HSK 50	HSK 63
d1	32	40	50	63
d2	24	30	38	48
d3	23,270	29,050	36,900	46,530
d4 (max)	26	34	42	53
d5	26,5	34,8	43	55
d6	37	45	59,3	72,3
d7	4	4	7	7
f1	20	20	26	26
f2	15	15	16	16
f3	16	16	18	18
L	51	55	67	74
l1	16	20	25	32
l2	3,2	4	5	6,3
l3	7,3	9,5	11	14,7

Shrink fit chuck



d1	L2	L5 minimum grip	RVR CTW 
3	-	9	-
4	-	12	-
5	-	15	-
6	37	22	M5 x 0,8
8	37	26	M6 x 1
10	42	31	M8 x 1
12	47	36	M10 x 1
14	47	36	M10 x 1
16	50	39	M12 x 1
18	50	39	M12 x 1
20	52	41	M16 x 1
25	58	47	M16 x 1
32	62	51	M16 x 1

CTO 4,5° standard (similar to DIN 69882-8)

Mandrino per calettamento termico

Shrink fit chuck

Porte-outils de frettage

Schrumpfutter



MANDRINI A CALETTAMENTO simile a DIN 69882-8

- Chuck Body Fine Balanced
G 2,5 - 25.000 Rpm - Or U < 1 gmm
- Run Out 3 micron
- Angolo di calettamento esterno 4,5° gradi
- Con grano di registrazione assiale
- Ø 3-4-5 senza grano di registrazione assiale
- Per utensili in HSS e in HM
- Tolleranza gambo utensile "h6"
- Raffreddamento con fori di refrigerazione "A RICHIESTA"

- Fori di refrigerazione "A RICHIESTA"

SHRINK FIT CHUCKS similar to DIN 69882-8

- Chuck Body Fine Balanced
G 2,5 - 25.000 Rpm - Or U < 1 gmm
- Run Out 3 micron
- 4,5° slope at the top
- With back-up screw
- Ø 3-4-5 Without back-up screw
- With coolant channels ON REQUEST
- For carbide steel and HSS shanks
- For tools with shank tolerance h6

- Coolant Channels "ON REQUEST"

Accessori | Accessories

ATR



p. 76

ASC



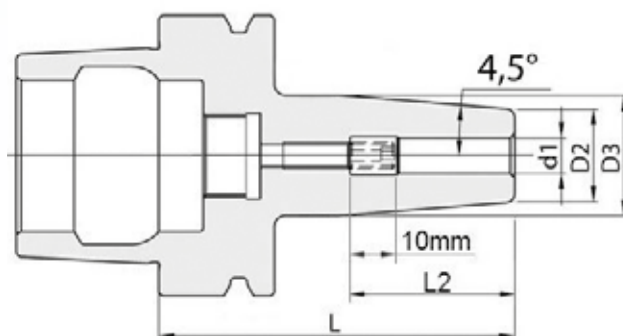
p. 310

Ricambi | Spare parts

RVR CTW



p. 352

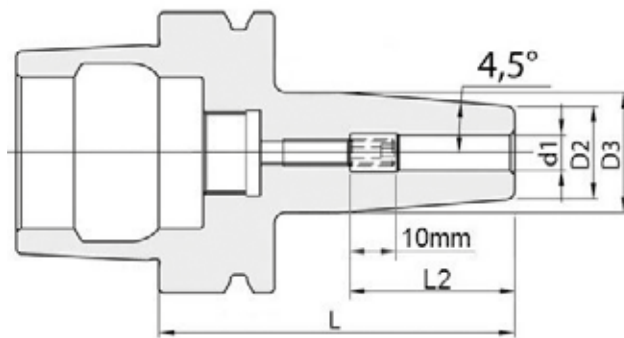


HSK 040 (E form) - CT0 4,5 STANDARD

codice - code	d1	L	D2	D3	L2	g	L5 minimum grip	Fori Refrigerazione Coolant Channels	APPLICATION
HKE.040.CT003.080	3	80	9	19	-	No RVR	9	-	
HKE.040.CT004.080	4	80	10	19	-	No RVR	12	-	
HKE.040.CT005.080	5	80	11	19	-	No RVR	15	-	
HKE.040.CT006.080	6	80	21	27	37	M5 x 0,8	22	•	
HKE.040.CT008.080	8	80	21	27	37	M6 x 1	26	•	
HKE.040.CT010.080	10	80	24	32	42	M8 x 1	31	•	
HKE.040.CT012.090	12	90	24	32	47	M10 x 1	36	•	
HKE.040.CT016.090	16	90	27	34	50	M12 x 1	39	•	

HSK 050 (E form) - CT0 4,5 STANDARD

codice - code	d1	L	D2	D3	L2	g	L5 minimum grip	Fori Refrigerazione Coolant Channels	APPLICATION
HKE.050.CT003.080	3	80	9	18	-	No RVR	9	-	
HKE.050.CT004.080	4	80	10	18	-	No RVR	12	-	
HKE.050.CT005.080	5	80	11	18	-	No RVR	15	-	
HKE.050.CT006.080	6	80	21	27	37	M5 x 0,8	22	•	
HKE.050.CT008.080	8	80	21	27	37	M6 x 1	26	•	
HKE.050.CT010.085	10	85	24	32	42	M8 x 1	31	•	
HKE.050.CT012.090	12	90	24	32	47	M10 x 1	36	•	
HKE.050.CT016.095	16	95	27	34	50	M12 x 1	39	•	
HKE.050.CT020.100	20	100	33	42	52	M16 x 1	41	•	



HSK 063 (E form) - CT0 4,5 STANDARD

codice - code	d1	L	D2	D3	L2	g	L5 minimum grip	Fori Refrigerazione Coolant Channels	APPLICATION
HKE.063.CT006.080	6	80	21	27	37	M5 x 0,8	22	•	
HKE.063.CT008.080	8	80	21	27	37	M6 x 1	26	•	
HKE.063.CT010.085	10	85	24	32	42	M8 x 1	31	•	
HKE.063.CT012.090	12	90	24	32	47	M10 x 1	36	•	
HKE.063.CT014.090	14	90	27	34	47	M10 x 1	36	•	
HKE.063.CT016.095	16	95	27	34	50	M12 x 1	39	•	
HKE.063.CT020.100	20	100	33	42	52	M16 x 1	41	•	
HKE.063.CT025.115	25	115	44	53	58	M16 x 1	47	•	

MICK

MICK

KROS

CNC TOOL HOLDERS

CTF slim - 4,5°

Mandrino per calettamento termico di finitura

Finishing shrink fit chuck

Porte outils de frettage pour finissage

Schrumpfutter zum schlichten



MANDRINI A CALETTAMENTO

Slim - 4,5°

MANDRINO A CALETTAMENTO DI FINITURA

- Chuck Body Fine Balanced
G 2,5 - 25.000 Rpm - Or U < 1 gmm
- Run Out 3 micron
- Angolo di calettamento esterno 4,5° gradi
- con grano di registrazione assiale
- Solo per utensili in HM
- Tolleranza gambo utensile "h6"

SHRINK FIT CHUCKS

Slim - 4,5°

SHRINK FIT CHUCK FOR FINISHING

- Chuck Body Fine Balanced
G 2,5 - 25.000 Rpm - Or U < 1 gmm
- Run Out 3 micron
- 4,5° slope at the top
- with back-up screw
- Only for carbide steel shanks
- For tools with shank tolerance h6

Accessori | Accessories

ATR



p. 76

ASC



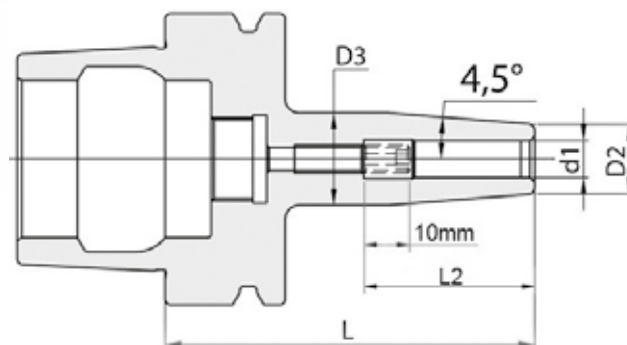
p. 310

Ricambi | Spare parts

RVR CTW



p. 352

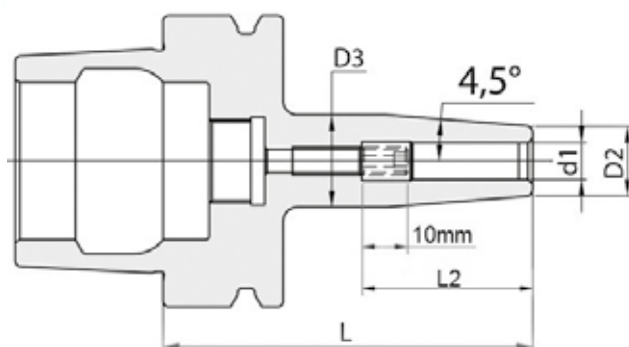


HSK 032 (E form) - CTF slim - 4,5°

codice - code	d1	L	D2	D3	L2	g	L5 minimum grip	APPLICATION
HKE.032.CTF03.060-45	3	60	9		-	No RVR	9	
HKE.032.CTF04.060-45	4	60	10		-	No RVR	12	
HKE.032.CTF05.060-45	5	60	11		-	No RVR	15	
HKE.032.CTF06.070-45	6	70	15		37	M5 x 0,8	22	
HKE.032.CTF08.070-45	8	70	15		37	M6 x 1	26	
HKE.032.CTF10.080-45	10	80	18		42	M8 x 1	31	

HSK 040 (E form) - CTF slim - 4,5°

codice - code	d1	L	D2	D3	L2	g	L5 minimum grip	APPLICATION
HKE.040.CTF06.130- 45	6	130	15	30	37	M5 x 0,8	22	
HKE.040.CTF08.130- 45	8	130	15	30	37	M6 x 1	26	
HKE.040.CTF10.130- 45	10	130	18	30	42	M8 x 1	31	
HKE.040.CTF12.130- 45	12	130	18	30	47	M10 x 1	36	



HSK 050 (E form) - CTF slim - 4,5°

codice - code	d1	L	D2	D3	L2	g	L5 minimum grip	APPLICATION
HKE.050.CTF06.080- 45	6	80	15	20	37	M5 x 0,8	22	
HKE.050.CTF06.130- 45	6	130	15	31	37	M5 x 0,8	22	
HKE.050.CTF08.080- 45	8	80	15	20	37	M6 x 1	26	
HKE.050.CTF08.130- 45	8	130	15	31	37	M6 x 1	26	
HKE.050.CTF10.085- 45	10	85	18	25	42	M8 x 1	31	
HKE.050.CTF10.130- 45	10	130	18	34	42	M8 x 1	31	
HKE.050.CTF12.130- 45	12	130	18	34	47	M10 x 1	36	

HSK 063 (E form) - CTF slim - 4,5°

codice - code	d1	L	D2	D3	L2	g	L5 minimum grip	APPLICATION
HKE.063.CTF06.130- 45	6	130	15	31	37	M5 x 0,8	22	
HKE.063.CTF08.130- 45	8	130	15	31	37	M6 x 1	26	
HKE.063.CTF10.130- 45	10	130	18	34	42	M8 x 1	31	
HKE.063.CTF12.130- 45	12	130	18	34	47	M10 x 1	36	

CTF slim - 3°

Mandrino per calettamento termico. Ideale per la costruzione di STAMPI e cavità profonde

Shrink fit chuck. Suitable for the MOLD and for deep cavities

Porte outils de frettage. Idéal pour la construction de MOLD et des cavités profondes

Schrumpfutter für tiefe Kavitäten geeignet, speziell für den Gesenk, und Formenbau



MANDRINI A CALETTAMENTO

Slim - 3°

MANDRINO A CALETTAMENTO DI FINITURA

- Chuck Body Fine Balanced
G 2,5 - 25.000 Rpm - Or U < 1 gmm
- Run Out 3 micron
- Angolo esterno inclinazione di 3° PER STAMPI
- Spessore Parete 3mm
- Senza grano di registrazione assiale
- Solo per utensili in HM
- Tolleranza gambo utensile "h6"

SHRINK FIT CHUCKS

Slim - 3°

SHRINK FIT CHUCK FOR FINISHING

- Chuck Body Fine Balanced
G 2,5 - 25.000 Rpm - Or U < 1 gmm
- Run Out 3 micron
- 3° slope at the top .Suitable for the MOLD
- 3 mm. wall thickness
- Without back-up screw
- Only for carbide tools
- For tools with shank tolerance h6

Accessori | Accessories

Ricambi | Spare parts

ATR



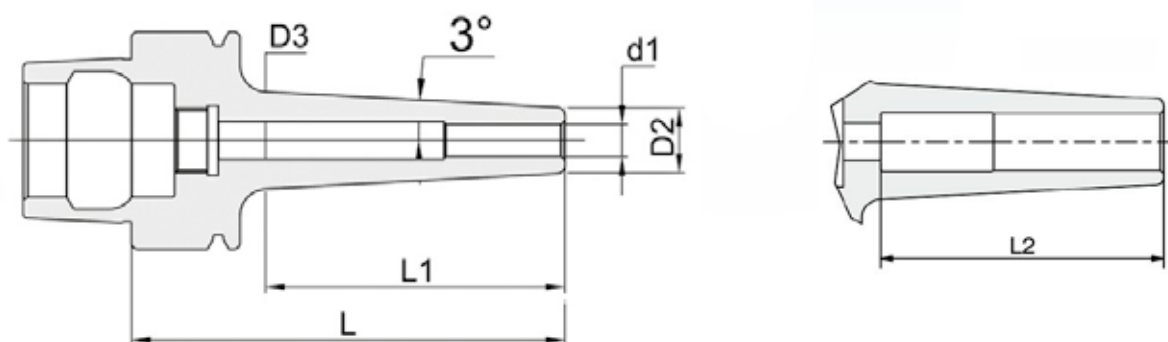
p. 76

ASC



p. 310

spessore parete 3 mm - 3 mm wall thickness



HSK 040 (E form) - CTF slim - 3°

codice - code	d1	L	D2	D3	L1	L2	L5 minimum grip	APPLICATION
HKE.040.CTF03.080- 30	3	80	9	14,8	55	-	9	
HKE.040.CTF04.080- 30	4	80	10	15,8	55	-	12	
HKE.040.CTF05.080- 30	5	80	11	16,8	55	-	15	
HKE.040.CTF06.080- 30	6	80	12	17,8	55	-	22	
HKE.040.CTF08.080- 30	8	80	14	19,8	55	48	26	
HKE.040.CTF10.080- 30	10	80	16	21,8	55	55	31	
HKE.040.CTF12.080- 30	12	80	18	23,8	55	60	36	

HSK 050 (E form) - CTF slim - 3°

codice - code	d1	L	D2	D3	L1	L2	L5 minimum grip	APPLICATION
HKE.050.CTF03.080- 30	3	80	9	14,2	50	-	9	
HKE.050.CTF04.080- 30	4	80	10	15,2	50	-	12	
HKE.050.CTF05.080- 30	5	80	11	16,2	50	-	15	
HKE.050.CTF06.080- 30	6	80	12	17,2	50	-	22	
HKE.050.CTF08.080- 30	8	80	14	19,2	50	-	26	
HKE.050.CTF10.085- 30	10	85	16	21,7	55	55	31	
HKE.050.CTF12.090- 30	12	90	18	24,2	60	60	36	

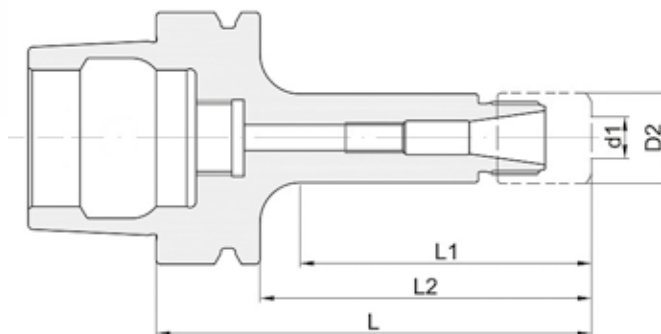
ERM - Mini DIN 6499

Portapinze di precisione ER - Mini DIN 6499

Precision collet chuck ER - Mini DIN 6499

Porte pinces de precision ER - Mini DIN 6499

Prazisions spannzangenfutter ER - Mini DIN 6499



PORTAPINZE ERM - Mini type High Performance

- Chuck Body Fine Balanced
G 2,5 - 25.000 Rpm - Or U < 1 gmm
- Run Out 3 micron
- Con grano di registrazione assiale

COLLET CHUCKS ERM - Mini type High Performance

- Chuck Body Fine Balanced
G 2,5 - 25.000 Rpm - Or U < 1 gmm
- Run Out 3 micron
- With back-up screw

HSK 032 (E form) - ERM - Mini

codice - code	d1	L	D2	L1	L2	Nuts/Ghiere	APPLICATION
HKE.032.ERM16.070	1-10	70	22	47	50	RGM-mini	
HKE.032.ERM16.090	1-10	90	22	67	70	RGM-mini	
HKE.032.ERM20.070	1-13	70	28	47	50	RGM-mini	

HSK 040 (E form) - ERM - Mini

codice - code	d1	L	D2	L1	L2	Nuts/Ghiere	APPLICATION
HKE.040.ERM11.050	0,5-7	50	16	27	30	RGM-mini	
HKE.040.ERM16.055	1-10	55	22	32	35	RGM-mini	

Accessori | Accessories



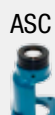
p. 76



p. 317



p. 344



p. 310

Ricambi | Spare parts



p. 338



p. 352

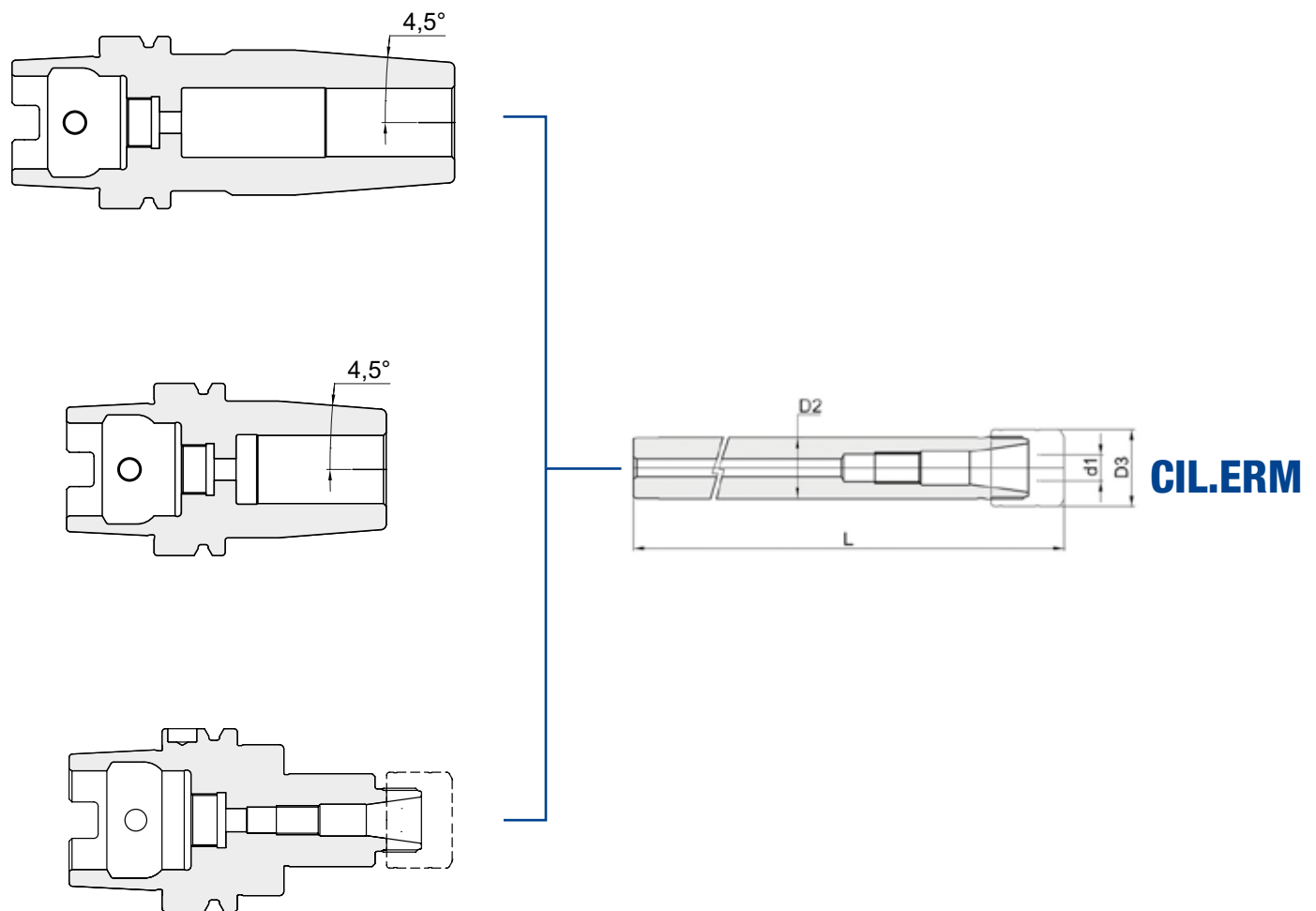
Prolunghe Extensions

Prolunga portapinze DIN 6499 con ghiera Mini (acciaio speciale per calettamento)

Extensions DIN 6499 with mini nuts (**special steel shrinking**)

Rallonges DIN 6499 avec mini ecrous (**en acier special**)

Verlängerungen mit mini spannmutter DIN 6499 (**spezieller stahl**)



ERH DIN 6499

Portapinze di precisione ER DIN 6499

Precision collet chuck ER DIN 6499

Porte pinces de precision ER DIN 6499

Prazisions spannzangenfutter ER DIN 6499



PORTAPINZE - ER type H/P High Performance

- Chuck Body Fine Balanced
G 2,5 - 25.000 Rpm - Or U < 1 gmm
- Run Out 3 micron
- Con grano di registrazione assiale
- (1) senza grano di registrazione assiale

COLLET CHUCKS ER type H/P High Performance

- Chuck Body Fine Balanced
G 2,5 - 25.000 Rpm - Or U < 1 gmm
- Run Out 3 micron
- With back-up screw
- (1) without back-up screw

Accessori | Accessories

ATR



p. 76

PER Q



p. 322

ACH GS



p. 344

ACH GX



p. 344

ASC



p. 310

Ricambi | Spare parts

RGX



p. 339

RGE

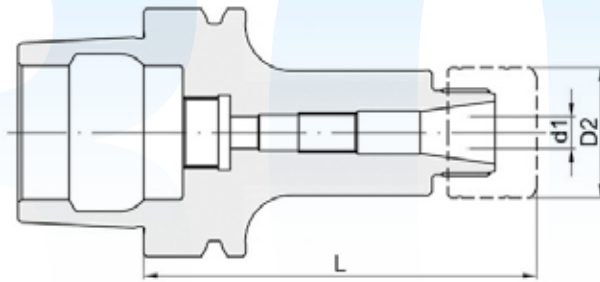


p. 341

RVR ER



p. 352



HSK 032 (E form) - ERH

codice - code	d1	L	D2	Nuts/ghiere	on-request Nuts/ghiere		APPLICATION
HKE.032.ERH16.060	0,5-10	60	32	RGE	RGX.ER16 D2=28	(1) No RVR	

HSK 040 (E form) - ERH

codice - code	d1	L	D2	Nuts/ghiere	on-request Nuts/ghiere		APPLICATION
HKE.040.ERH11.060	0,5-7	60	25	RGX			
HKE.040.ERH11.100	0,5-7	100	25	RGX			
HKE.040.ERH16.080	0,5-10	80	32	RGE	RGX.ER16 D2=28		
HKE.040.ERH25.065	1,5-16	65	42	RGE		(1) No RVR	
HKE.040.ERH25.120	1,5-16	120	42	RGE			

HSK 050 (E form) - ERH

codice - code	d1	L	D2	Nuts/ghiere	on-request Nuts/ghiere		APPLICATION
HKE.050.ERH16.100	0,5-10	100	32	RGE	RGX.ER16 D2=28		
HKE.050.ERH25.080	1,5-16	80	42	RGE		(1) No RVR	
HKE.050.ERH32.070	2,5-20	70	50	RGE		(1) No RVR	

HSK 063 (E form) - ERH

codice - code	d1	L	D2	Nuts/ghiere	on-request Nuts/ghiere		APPLICATION
HKE.063.ERH32.075	2,5-20	75	50-CH46	RGE		(1) No RVR	
HKE.063.ERH40.080	3-26	80	63	RGE		(1) No RVR	

FSW Cooling Plus Din 6357-B

Portafrese a spianare con trascinatore fisso - con canali di lubrificazione

Face mill arbor with coolant bores

Porte-fraises à surfer avec conduits d'arrosage

Messerkopf- aufnahme mit Kühlmittelbohrun



G 2,5
25.000 RPM
or
U < 1 gmm

3 μm



HPC

PORTAFRESE

con canali di lubrificazione

PORTAFRESE A SPIANARE CON TRASCINATORE FISSO

- Chuck Body Fine Balanced
G 2,5 - 25.000 Rpm - Or U < 1 gmm
- Run Out 3 micron
- Fori di refrigerazione "STANDARD"
- FS : Senza canali di lubrificazione ed equilibratura standard G 6,3 15000 RPM

FACE MILL ARBOR

with coolant channels

FACE MILL ARBOR WITH COOLANT CHANNELS

- Chuck Body Fine Balanced
G 2,5 - 25.000 Rpm - Or U < 1 gmm
- Run Out 3 micron
- With "STANDARD" coolant channels
- FS : Without coolant bores and standard balanced G 6,3 15000 RPM

Accessori | Accessories

Ricambi | Spare parts

ATR



p. 76

ASC



p. 310

RVU 5931



p. 355

RCT FM/DP



p. 355

RVU 5933



p. 355

RRS FM



p. 356



HSK 040 (E form) - FS

codice - code	d1	L	D2	APPLICATION
				FS Senza canali di lubrificazione - Without coolant bores
HKE.040.FS016.050	16	50	32	
HKE.040.FS022.060	22	60	48	

HSK 050 (E form)- FS

codice - code	d1	L	D2	APPLICATION
				FS Senza canali di lubrificazione - Without coolant bores
HKE.050.FS016.050	16	50	32	
HKE.050.FS022.060	22	60	48	



ul. Dziewosłęby 14/1, 04-403 Warszawa

Tel: +48 22 673 55 48

info@stmech.pl www.stmech.pl