

CIL.CTO 4,5° Standard Version

Prolunga per calettamento termico
Shrink fit extensions
Rallonges de frottage
Schrumpfverlängerungen

p. 35



CIL.CTP 4,5°

Prolunga per calettamento termico senza grano di registrazione assiale. Regolazione variabile della lunghezza
Shrink fit extensions without back-up screw. Variable length setting
Rallonges de frottage sans vis de butée. Reglage
Schrumpfverlängerungen ohne Einstellschraube. Beliebige Langeneinstellung

p. 38



CIL.CTF 3° Slim Version

Prolunga per calettamento termico. Ideale per la costruzione di STAMPI e cavità profonde
Shrink fit extensions. Suitable for the MOLD and for deep cavities
Rallonges de frottage. Idéal pour la construction de Mold et des cavités profondes
Schrumpfverlängerungen. Für tiefe Kavitäten geeignet, speziell für den Gesenk, und Formenbau

p. 40



CIL.CTR 3° Slim Version

Riduzioni prolungate rinforzate per calettamento termico. Ideale per la costruzione di STAMPI e cavità profonde
Shrink fit strengthened extensions. Suitable for the MOLD and for deep cavities
Rallonges de frottage. Idéal pour la construction de Mold et des cavités profondes
Schrumpfverlängerungen - Für tiefe Kavitäten geeignet - speziell für den Gesenk- und Formenbau

p. 43



CIL.MDO

Prolunga per frese attacco filettato
Milling cutter extensions with threaded connection
Rallonges pour fraiser a visser
Verlängerungen für Einschraubfräser

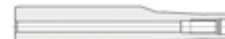
p. 47



CIL.MDR

Prolunga con gambo rinforzatabo per frese attacco filettato
Milling cutter extensions with strengthened cylindrical shank and threaded connection
Rallonges pour fraiser a visser
Verlängerungen für Einschraubfräser

p. 50



CIL.MDW Weldon Shank

Prolunga con gambo weldon rinforzato per frese attacco filettato
Milling cutter extensions with strengthened weldon shank and threaded connection
Rallonges pour fraiser a visser attaque Weldon renforcée
Verlängerungen für Einschraubfräser Weldon schaft verstärkt

p. 52



MDM

Sistema Modulare filettato - per frese con attacco gambo filettato
Threaded modular tool system - For threaded type cutter
Fileté système modulaire d'outils - Pour fraise de type fileté
Gewinde modulare Werkzeugsystem - Für Gewindetyp Fräse

p. 54



MDM.ER

Sistema Modulare filettato - per frese con attacco gambo filettato - per portapinzze ERM (mini)
Threaded modular tool system - For threaded type cutter - For collet chuck ERM (mini)
Fileté système modulaire d'outils - Pour fraise de type fileté - Pour pince de serrage ERM (mini)
Gewinde modulare Werkzeugsystem - Für Gewindetyp Fräse - Für Spannzange ERM (mini)

p. 55



CIL.ERM Mini Nuts

Prolunga portapinzze DIN 6499 con ghiera Mini (acciaio speciale per calettamento)
Extensions DIN 6499 with mini nuts (special steel shrinking)
Rallonges DIN 6499 avec mini ecrous (en acier special)
Verlängerungen mit mini spannmutter DIN 6499 (spezieller stahl)

p. 57



PRO

UNTO



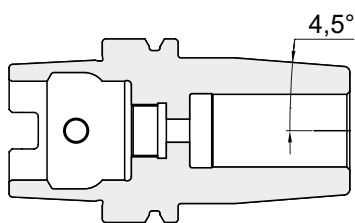
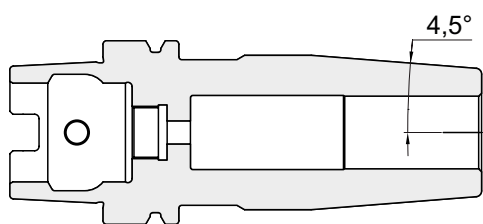
Prolunghe Extensions

Prolunghe per calettamento termico

Shrink fit extensions

Rallonges de frettage

Schrumpfverlängerungen



CIL.CTO



CIL.CTP



CIL.CTF



CIL.CTR

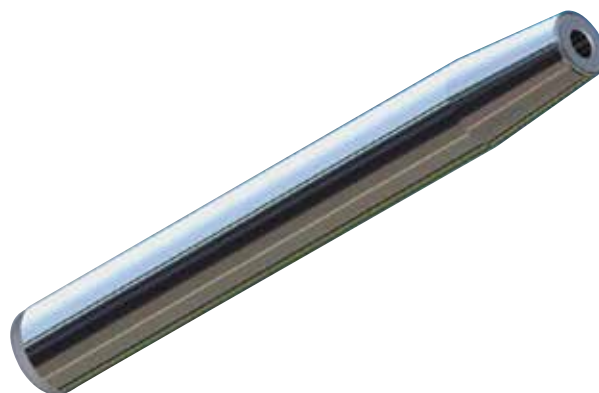
CIL CTO 4,5° standard

Prolunga per calettamento termico

Shrink fit extensions

Rallonges de frettage

Schrumpfverlängerungen



PROLUNGA CON ATTACCO CILINDRICO

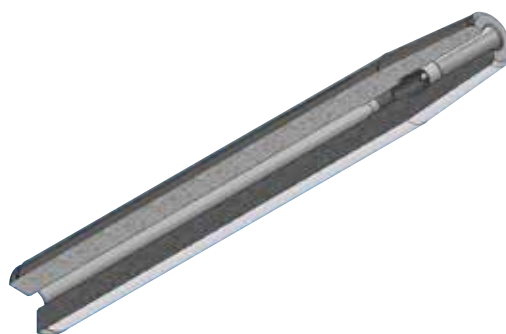
Acciaio speciale per calettamento termico

- Run Out 3 micron
- Angolo di calettamento esterno 4,5° gradi
- Con grano di registrazione assiale
- Per utensili in HSS e in HM
- Tolleranza gambo utensile " h6 "
- D 3/4/5 vedi CIL.CTP - CIL.CTF

SHRINK-FIT EXTENSION

Special Steel Shrinking

- Run Out 3 micron
- 4,5° slope at the top
- With back-up screw
- For carbide steel and HSS shanks
- For tools with shank tolerance h6
- D 3/4/5 search CIL.CTP - CIL.CTF



Accessori | Accessories

Ricambi | Spare parts

RVR CTW



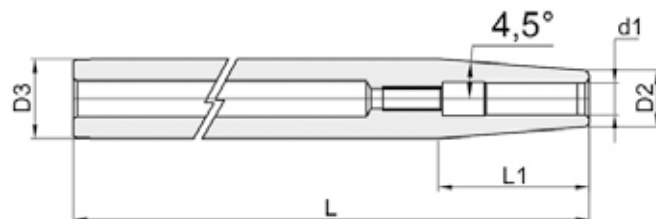
p. 352

Prolunga per calettamento termico

Shrink fit extensions

Rallonges de frettage

Schrumpfverlängerungen



CIL CT0 4,5° standard - L=130

CODICE-CODE	d1	L	D2	D3-H6	minimum grip	L1	-	-
CIL.016.CT006.130	6	130	10	16	22	38		
CIL.020.CT006.130	6	130	14	20	22	38		
CIL.020.CT008.130	8	130	14	20	26	38		
CIL.025.CT008.130	8	130	19	25	26	38		
CIL.025.CT010.130	10	130	20	25	31	32		
CIL.025.CT012.130	12	130	20	25	36	32		
CIL.025.CT016.130	16	130	22	25	39	19		
CIL.032.CT012.130	12	130	24	32	36	51		
CIL.032.CT016.130	16	130	27	32	39	32		
CIL.032.CT020.130	20	130	27	32	41	32		

CIL CT0 4,5° standard - L=160

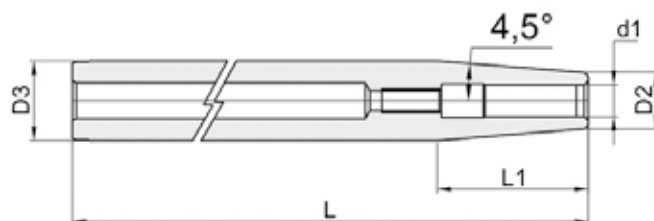
CODICE-CODE	d1	L	D2	D3-H6	minimum grip	L1	-	-
CIL.016.CT006.160	6	160	10	16	22	38		
CIL.020.CT006.160	6	160	14	20	22	38		
CIL.020.CT008.160	8	160	14	20	26	38		
CIL.025.CT008.160	8	160	19	25	26	38		
CIL.025.CT010.160	10	160	20	25	31	32		
CIL.025.CT012.160	12	160	20	25	36	32		
CIL.025.CT014.160	14	160	20	25	36	32		
CIL.025.CT016.160	16	160	22	25	39	19		
CIL.032.CT012.160	12	160	24	32	36	51		
CIL.032.CT014.160	14	160	27	32	36	32		
CIL.032.CT016.160	16	160	27	32	39	32		
CIL.032.CT018.160	18	160	27	32	39	32		
CIL.032.CT020.160	20	160	27	32	41	32		

Prolunga per calettamento termico

Shrink fit extensions

Rallonges de frettage

Schrumpfverlängerungen



CIL CTO 4,5° standard - L=200

CODICE-CODE	d1	L	D2	D3-H6	minimum grip	L1	-	-
CIL.020.CT006.200	6	200	14	20	22	38		
CIL.025.CT006.200	6	200	14	25	22	70		
CIL.025.CT008.200	8	200	19	25	26	38		
CIL.025.CT010.200	10	200	20	25	31	32		
CIL.025.CT012.200	12	200	20	25	36	32		
CIL.025.CT014.200	14	200	20	25	36	32		
CIL.025.CT016.200	16	200	22	25	39	19		
CIL.032.CT012.200	12	200	24	32	36	51		
CIL.032.CT016.200	16	200	27	32	39	32		
CIL.032.CT020.200	20	200	27	32	41	32		
CIL.032.CT025.200	25	200	32	32	47			

CIL CTO 4,5° standard - L=300

CODICE-CODE	d1	L	D2	D3-H6	minimum grip	L1	-	-
CIL.025.CT016.300	16	300	22	25	39	19		

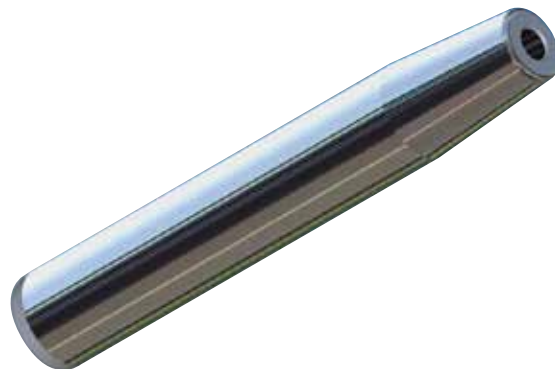
CIL CTP 4,5°

Prolunga senza grano di registrazione assiale. Regolazione variabile della lunghezza

Shrink fit extensions without back-up screw. Variable length setting

Rallonges de frottage sans vis de butée. Reglage

Schrumpfverlängerungen ohne Einstellschraube. Beliebige Langeneinstellung



PROLUNGA CON ATTACCO CILINDRICO

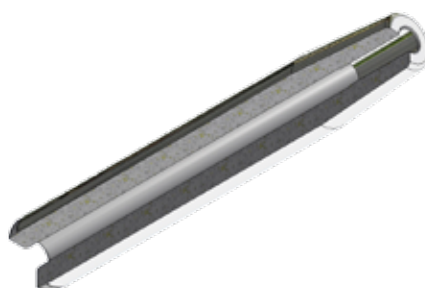
Acciaio speciale per calettamento termico

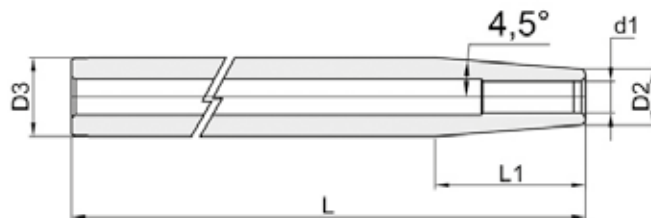
- Run Out 3 micron
- Angolo di calettamento esterno 4,5° gradi
- Senza grano di registrazione assiale
- Per utensili in HSS e in HM
- D 3/4/5 - solo per utensili in Metallo Duro
- Tolleranza gambo utensile " h6"

SHRINK-FIT EXTENSION

Special Steel Shrinking

- Run Out 3 micron
- 4,5° slope at the top
- Without back-up screw
- For carbide steel and HSS shanks
- D 3/4/5 - only for carbide steel shank
- For tools with shank tolerance h6





CIL CTP 4,5° - L=160

CODICE-CODE	d1	L	D2	D3-H6	minimum grip	L1	-	-
CIL.012.CTP03.160	3	160	8	12	9	25		
CIL.012.CTP04.160	4	160	8	12	12	25		
CIL.016.CTP03.160	3	160	9	16	9	44		
CIL.016.CTP04.160	4	160	9	16	12	44		
CIL.016.CTP05.160	5	160	10	16	15	38		
CIL.016.CTP06.160	6	160	10	16	22	38		
CIL.020.CTP05.160	5	160	14	20	15	38		
CIL.020.CTP06.160	6	160	14	20	22	38		
CIL.020.CTP08.160	8	160	14	20	26	38		
CIL.025.CTP08.160	8	160	19	25	26	38		
CIL.025.CTP10.160	10	160	20	25	31	32		
CIL.025.CTP12.160	12	160	20	25	36	32		
CIL.025.CTP14.160	14	160	20	25	36	32		
CIL.025.CTP16.160	16	160	22	25	39	19		
CIL.032.CTP12.160	12	160	24	32	36	51		
CIL.032.CTP14.160	14	160	27	32	36	32		
CIL.032.CTP16.160	16	160	27	32	39	32		
CIL.032.CTP18.160	18	160	27	32	39	32		
CIL.032.CTP20.160	20	160	27	32	41	32		

CIL CTP 4,5° - L=300

CODICE-CODE	d1	L	D2	D3-H6	minimum grip	L1	-	-
CIL.025.CTP10.300	10	300	20	25	31	32		
CIL.025.CTP12.300	12	300	20	25	36	32		

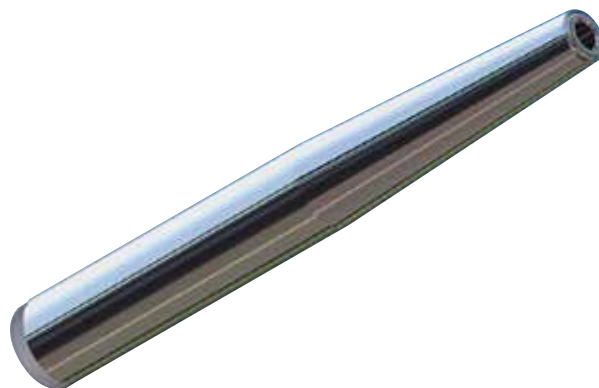
CIL CTF 3° slim

Prolunga per calettamento termico. Ideale per la costruzione di STAMPI e cavità profonde

Shrink fit extensions. Suitable for the MOLD and for deep cavities

Rallonges de frotage. Idéal pour la construction de Mold et des cavités profondes

Schrumpfverlängerungen. Für tiefe Kavitäten geeignet, speziell für den Gesenk, und Formenbau



PROLUNGA CON ATTACCO CILINDRICO

Acciaio speciale per calettamento termico

- Run Out 3 micron
- INCLINAZIONE 3° PER STAMPI
- Spessore parete 3 mm
- Senza grano di registrazione assiale
- Solo per utensili in Metallo Duro
- Tolleranza gambo utensile " h6 "

SHRINK-FIT EXTENSION

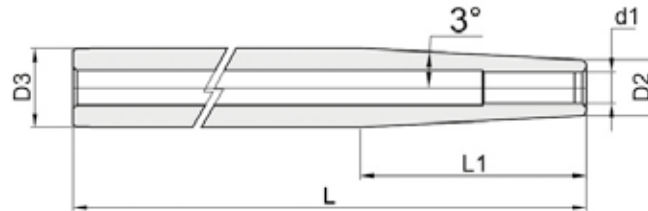
Special Steel Shrinking

- Run Out 3 micron
- 3° slope at the top
- 3 mm wall thickness
- Suitable for the MOLD and deep cavities
- Without back-up screw
- For solid carbide tools
- Tools with shank tolerance "h6"



Prolunga per calettamento SLIM 3°

Shrink fit extensions SLIM 3°



CIL CTF 3° slim - L=160

CODICE-CODE	d1	L	D2	D3-H6	minimum grip	L1	-	-
CIL.016.CTF03.160	3	160	9	16	9	67		
CIL.016.CTF04.160	4	160	10	16	12	57		
CIL.016.CTF05.160	5	160	11	16	15	48		
CIL.016.CTF06.160	6	160	12	16	22	38		
CIL.016.CTF08.160	8	160	14	16	26	19		
CIL.020.CTF06.160	6	160	12	20	22	76		
CIL.020.CTF08.160	8	160	14	20	26	57		
CIL.020.CTF10.160	10	160	16	20	31	38		
CIL.020.CTF12.160	12	160	18	20	36	19		

Prolunghe Extensions

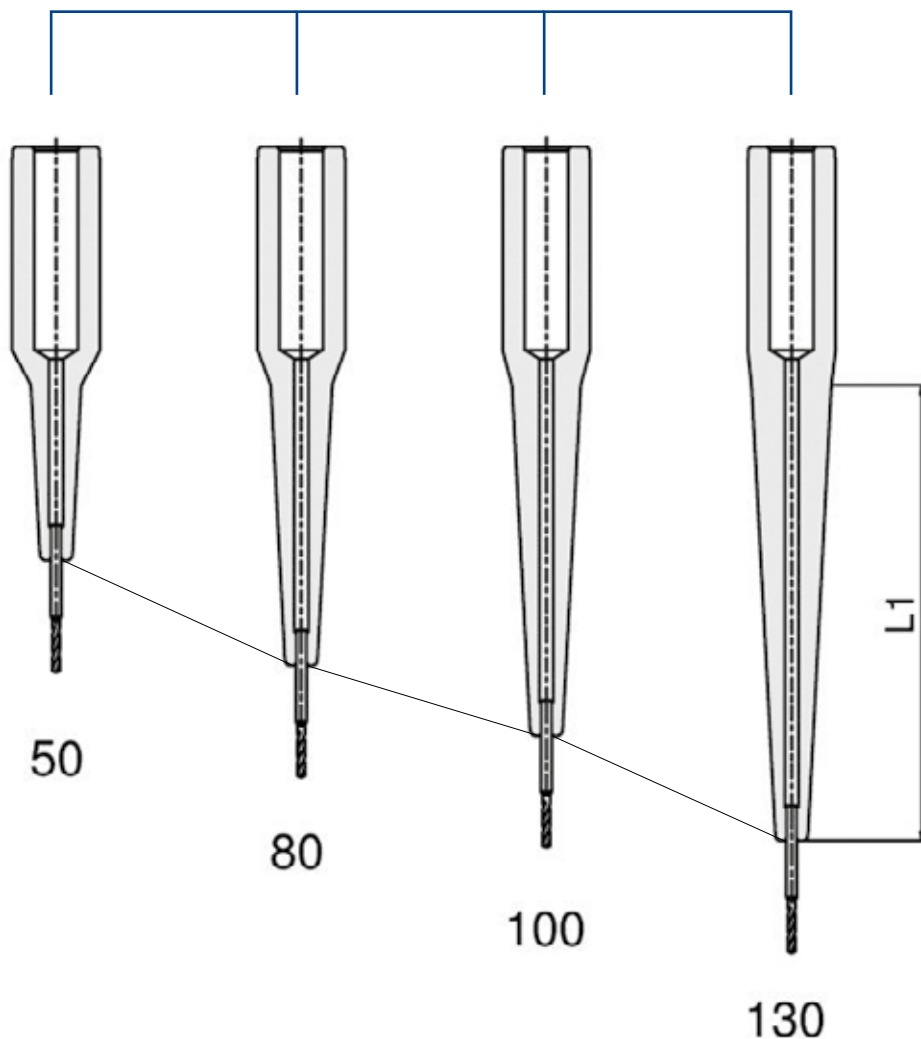
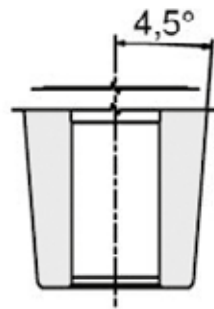
CTR 3°

Riduzioni prolungate rinforzate per calettamento termico. Ideale per la costruzione di STAMPI e cavità profonde

Heavy Duty Shrink fit extensions. Suitable for the MOLD and for deep cavities

Rallonges de frettage. Idéal pour la construction de Mold et des cavités profondes

Schrumpfverlängerungen - Für tiefe Kavitäten geeignet - speziell für den Gesenk- und Formenbau



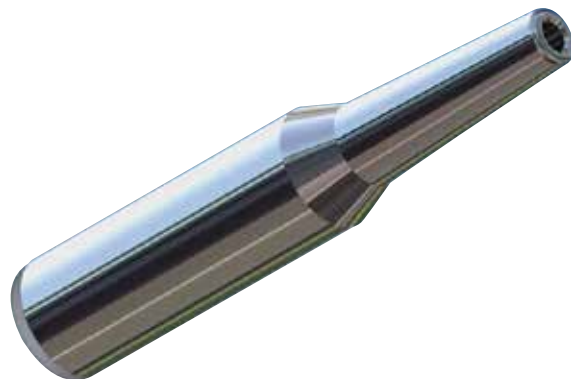
CIL CTR 3° slim

Riduzione prolungata rinforzata 3° . Ideale per la costruzione di STAMPI e cavità profonde

Heavy Duty Shrink fit extensions 3°. Suitable for the MOLD and for deep cavities

Rallonges de frettage. Idéal pour la construction de Mold et des cavités profondes

Schrumpfverlängerungen. Für tiefe Kavitäten geeignet, speziell für den Gesenk, und Formenbau

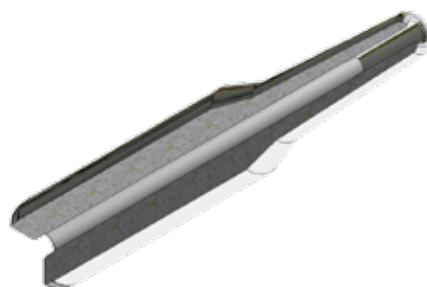


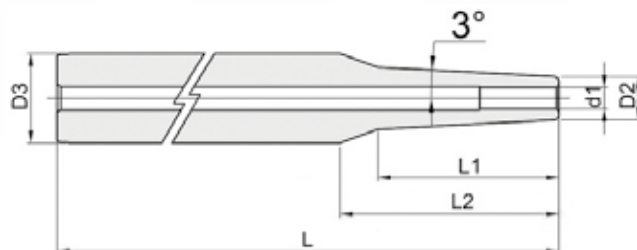
RIDUZIONI PROLUNGATE con gambo rinforzato **Acciaio speciale per calettamento termico**

- Run Out 3 micron
- INCLINAZIONE 3° PER STAMPI
- Spessore parete 3 mm
- Senza grano di registrazione assiale
- Solo per utensili in Metallo Duro
- Tolleranza gambo utensile "h6"

LONG HEAVY DUTY REDUCTIONS **Special Steel Shrinking**

- Run Out 3 micron
- 3° slope at the top
- 3 mm wall thickness
- Suitable for the MOLD and deep cavities
- Without back-up screw
- For solid carbide tools
- Tools with shank tolerance "h6"



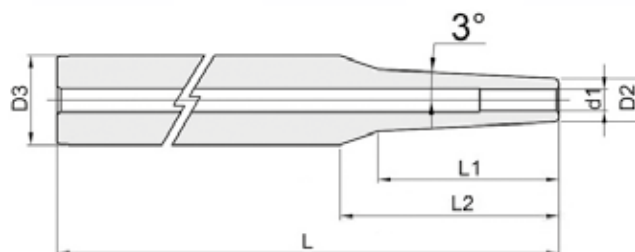


CIL CTR 3° slim - L1=50

CODICE-CODE	d1	L	D2	D3-H6	minimum grip	L1	L2	-
CIL.025.CTR03.050	3	118	9	25	9	50	60	-
CIL.025.CTR04.050	4	118	10	25	12	50	60	-
CIL.025.CTR05.050	5	118	11	25	15	50	60	-
CIL.025.CTR06.050	6	118	12	25	22	50	60	-
CIL.025.CTR08.050	8	118	14	25	26	50	60	-
CIL.025.CTR10.050	10	118	16	25	31	50	60	-
CIL.025.CTR12.050	12	118	18	25	36	50	60	-

CIL CTR 3° slim - L1=80

CODICE-CODE	d1	L	D2	D3-H6	minimum grip	L1	L2	-
CIL.025.CTR03.080	3	148	9	25	9	80	90	-
CIL.025.CTR04.080	4	148	10	25	12	80	90	-
CIL.025.CTR05.080	5	148	11	25	15	80	90	-
CIL.025.CTR06.080	6	148	12	25	22	80	90	-
CIL.025.CTR08.080	8	148	14	25	26	80	90	-
CIL.025.CTR10.080	10	148	16	25	31	80	85	-
CIL.025.CTR12.080	12	148	18	25	36	80	80	-



CIL CTR 3° slim - L1=100

CODICE-CODE	d1	L	D2	D3-H6	minimum grip	L1	L2	-
CIL.025.CTR03.100	3	168	9	25	9	100	110	-
CIL.025.CTR04.100	4	168	10	25	12	100	110	-
CIL.025.CTR05.100	5	168	11	25	15	100	110	-
CIL.025.CTR06.100	6	168	12	25	22	100	110	-

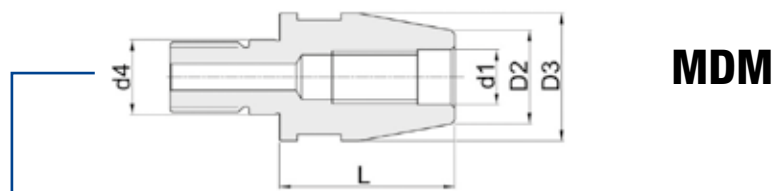
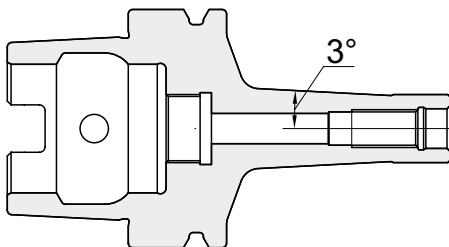
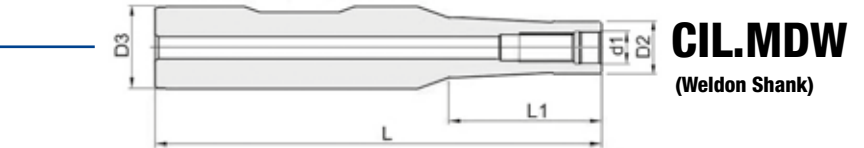
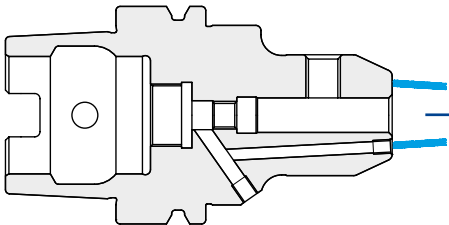
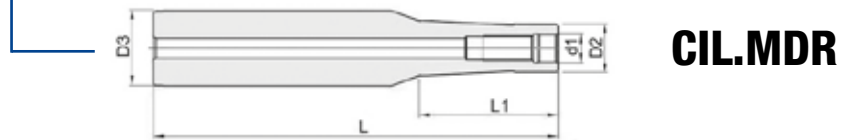
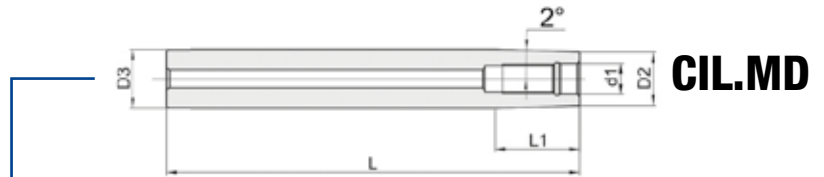
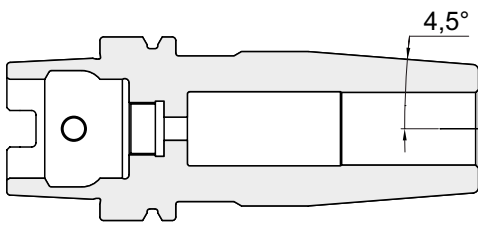
CIL CTR 3° slim - L1=130

CODICE-CODE	d1	L	D2	D3-H6	minimum grip	L1	L2	-
CIL.032.CTR08.130	8	250	14	32	26	130	148	-
CIL.032.CTR10.130	10	250	16	32	31	130	148	-
CIL.032.CTR12.130	12	250	18	32	36	130	133	-

Prolunghe Extensions

Sistema modulare per: frese attacco filettato

Threaded modular tool system for:
milling cutter with threaded connection



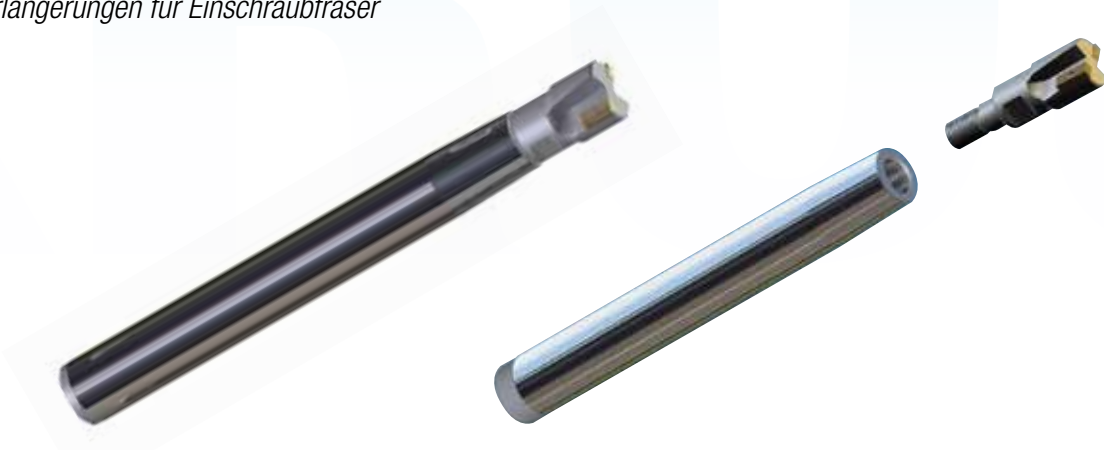
CIL MDO

Prolunga per frese attacco filettato

Milling cutter extensions with threaded connection

Rallonges pour fraiser a visser

Verlängerungen für Einschraubfräser



PROLUNGA ATTACCO CILINDRICO

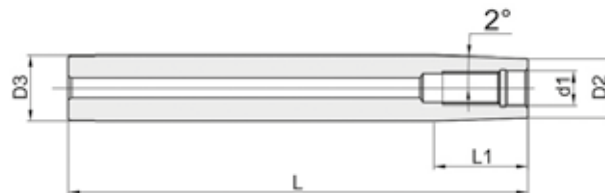
Acciaio speciale per calettamento termico

- Run Out 3 micron
- INCLINAZIONE < 3° PER STAMPI
- Gambo cilindrico h6

SPECIAL STEEL EXTENSION

Special Steel Shrinking

- Run Out 3 micron
- < 3° slope at the top
- Suitable for the MOLD and deep cavities
- Cylindrical Shank h6



CIL MDO - L=160

CODICE-CODE	d1	L	D2	D3-H6	L1	-	-
CIL.016.MD008.160	8,5 M8	160	13.5	16	36	-	-
CIL.020.MD010.160	10,5 M10	160	18	20	28,5	-	-
CIL.025.MD012.160	12,5 M12	160	21	25	57	-	-
CIL.032.MD016.160	17M16	160	29	32	43	-	-

Accessori | Accessories

Ricambi | Spare parts

MDM

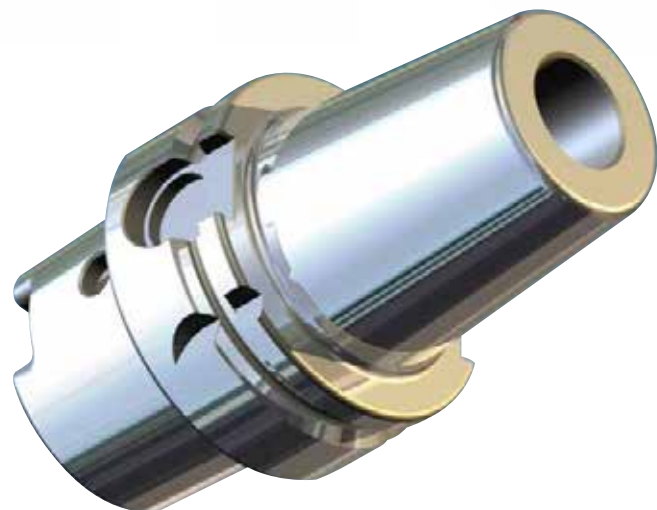


p. 54

MDM ER



p. 55



Prolunghe Extensions

MDR - MDW

Prolunghe con gambo cilindrico e Weldon rinforzato

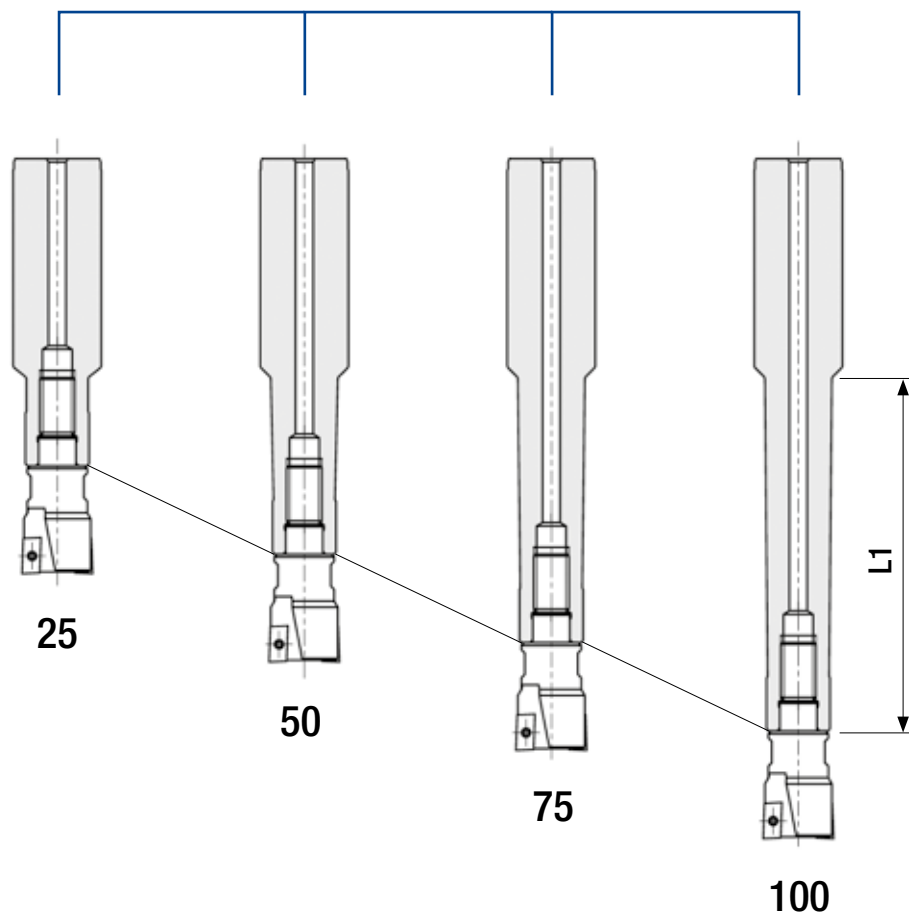
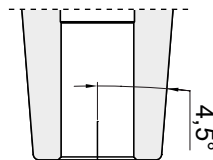
Heavy Duty extensions with cylindrical and Weldon shank

Prolunga per frese attacco filettato

Milling cutter extensions with threaded connection

Rallonges pour fraiser a visser

Verlängerungen für Einschraubfräser



CIL MDR

Prolunghe Rinforzate MDR ingombro ridotto per frese attacco filettato

Heavy Duty extensions MDR smallest footprint for threaded type cutter

Rallonges pour fraiser a visser

Verlängerungen für Einschraubfräser

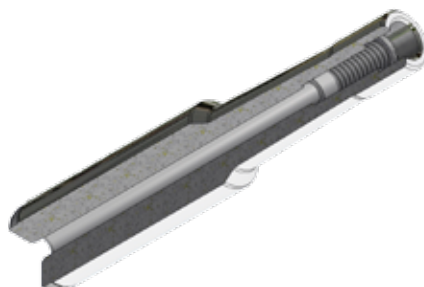


**PROLUNGHE RINFORZATE
CON INGOMBRO RIDOTTO - D4
Acciaio speciale per calettamento termico**

- Run Out 3 micron
- INCLINAZIONE < 3° PER STAMPI
- Gambo cilindrico h6
- anche per mandrini a calettamento termico

**Heavy Duty EXTENSIONS
smallest footprint - D4
Special Steel Shrinking**

- Run Out 3 micron
- < 3° slope at the top
- Suitable for the MOLD and deep cavities
- Cylindrical Shank - h6



Accessori | Accessories

Ricambi | Spare parts

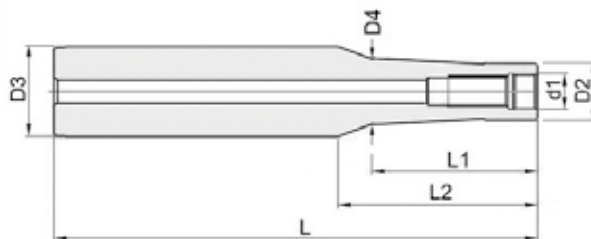
MDM

MDM ER



p. 54

p. 55



CIL MDR

CODICE-CODE	d1	L	D2	D3-H6	D4	L1	L2	-
CIL.020.MDR08.025	8,5-M8	82	13,5	20	15	25	29	
CIL.020.MDR08.050	8,5-M8	107	13,5	20	15	50	54	
CIL.020.MDR08.075	8,5-M8	132	13,5	20	15	75	79	
CIL.025.MDR10.025	10,5-M10	88	18	25	19	25	29	
CIL.025.MDR10.050	10,5-M10	113	18	25	19	50	54	
CIL.025.MDR10.075	10,5-M10	138	18	25	19	75	79	
CIL.025.MDR10.100	10,5-M10	163	18	25	19	100	104	
CIL.025.MDR12.025	12,5-M12	88	21	25	24	25	29	
CIL.025.MDR12.050	12,5-M12	113	21	25	24	50	54	
CIL.025.MDR12.075	12,5-M12	138	21	25	24	75	79	
CIL.025.MDR12.100	12,5-M12	163	21	25	24	100	104	
CIL.032.MDR16.050	17-M16	117	29	32	29	50	54	
CIL.032.MDR16.075	17-M16	142	29	32	29	75	79	
CIL.032.MDR16.100	17-M16	167	29	32	29	100	104	
CIL.032.MDR16.125	17-M16	192	29	32	29	125	129	

CIL MDW

Prolunghe Rinforzate MDW (Weldon) ingombro ridotto per frese attacco filettato

Heavy Duty extensions MDW (Weldon) smallest footprint for threaded type cutter

Rall onges pour fraiser a visser attaque Weldon renforcèe

Verlängerungen für Einschraubfräser Weldon schaft verstärkt



PROLUNGHE RINFORZATE CON INGOMBRO RIDOTTO - D4 Acciaio speciale per calettamento termico

- Run Out 3 micron
- INCLINAZIONE < 3° PER STAMPI
- Gambo attacco Weldon (Din 1835 B) - h6

HEAVY DUTY EXTENSIONS SMALLEST FOOTPRINT - D4 Special Steel Shrinking

- Run Out 3 micron
- < 3° slope at the top
- Suitable for the MOLD and deep cavities
- Weldon Shank (Din 1835 - B) - h6

Accessori | Accessories

Ricambi | Spare parts

MDM

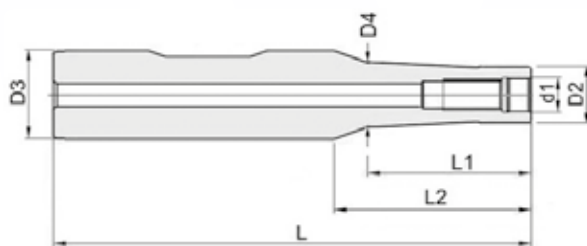


p. 54

MDM ER



p. 55



CIL MDW

CODICE-CODE	d1	L	D2	D3-H6	D4	L1	L2	-
CIL.020.MDW08.025	8,5-M8	82	13,5	20	15	25	29	
CIL.020.MDW08.050	8,5-M8	107	13,5	20	15	50	54	
CIL.020.MDW08.075	8,5-M8	132	13,5	20	15	75	79	
CIL.025.MDW10.025	10,5-M10	88	18	25	19	25	29	
CIL.025.MDW10.050	10,5-M10	113	18	25	19	50	54	
CIL.025.MDW10.075	10,5-M10	138	18	25	19	75	79	
CIL.025.MDW10.100	10,5-M10	163	18	25	19	100	104	
CIL.025.MDW12.025	12,5-M12	88	21	25	24	25	29	
CIL.025.MDW12.050	12,5-M12	113	21	25	24	50	54	
CIL.025.MDW12.075	12,5-M12	138	21	25	24	75	79	
CIL.025.MDW12.100	12,5-M12	163	21	25	24	100	104	
CIL.032.MDW16.050	17-M16	117	29	32	29	50	54	
CIL.032.MDW16.075	17-M16	142	29	32	29	75	79	
CIL.032.MDW16.100	17-M16	167	29	32	29	100	104	
CIL.032.MDW16.125	17-M16	192	29	32	29	125	129	

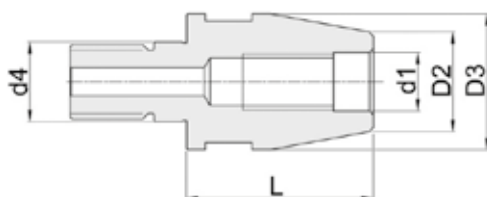
MDM MD

Sistema Modulare filettato - per frese con attacco gambo filettato

Threaded modular tool system - For threaded type cutter

Fileté système modulaire d'outils - Pour fraise de type fileté

Gewinde modulare Werkzeugsystem - Für Gewindetyp Fräse



EXTENSIONS

CODICE-CODE	d1	L	D2	D3	d4			
MDM.008.MD008.030	8,5 M8	30	13,5	13,5	8,5 M8			
MDM.010.MD010.035	10,5 M10	35	18	18	10,5M10			
MDM.012.MD012.040	12,5 M12	40	21	21	12,5M12			
MDM.016.MD016.040	17M16	40	29	29	17M16			

REDUCTIONS

CODICE - CODE	D1	L	D2	D3	D4	L1	-	-
MDM.010.MD008.030	8,5M8	30	13,5	18	10,5 M10			
MDM.012.MD008.040	8,5M8	40	13,5	21	12,5 M12			
MDM.012..MD010.035	10,5 M10	35	18	21	12,5 M12			
MDM.016.MD010.060	10,5 M10	60	18	29	17M16			
MDM.016.MD012.040	12,5 M12	40	21	29	17M16			

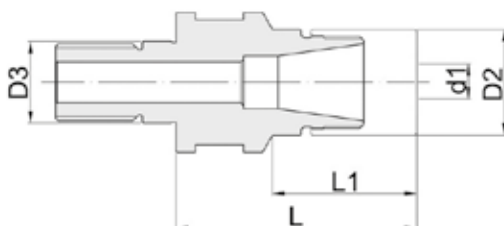
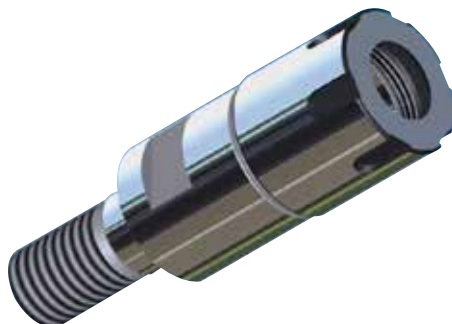
MDM ER mini

Sistema Modulare filettato - per frese con attacco gambo filettato - per portapinze ERM (mini)

Threaded modular tool system - For threaded type cutter - For collet chuck ERM (mini)

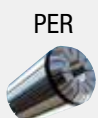
Fileté système modulaire d'outils - Pour fraise de type fileté - Pour pince de serrage ERM (mini)

Gewinde modulare Werkzeugsystem - Für Gewindetyp Fräse - Für Spannzange ERM (mini)



CODICE-CODE	d1	L	D2	D3	L1
MDM.012.ERM16.045	0,5-10	45	22	12,5 M12	28
MDM.016.ERM16.050	0,5-10	50	22	17M16	30

Accessori | Accessories



p. 317



p. 344

Ricambi | Spare parts



p. 338

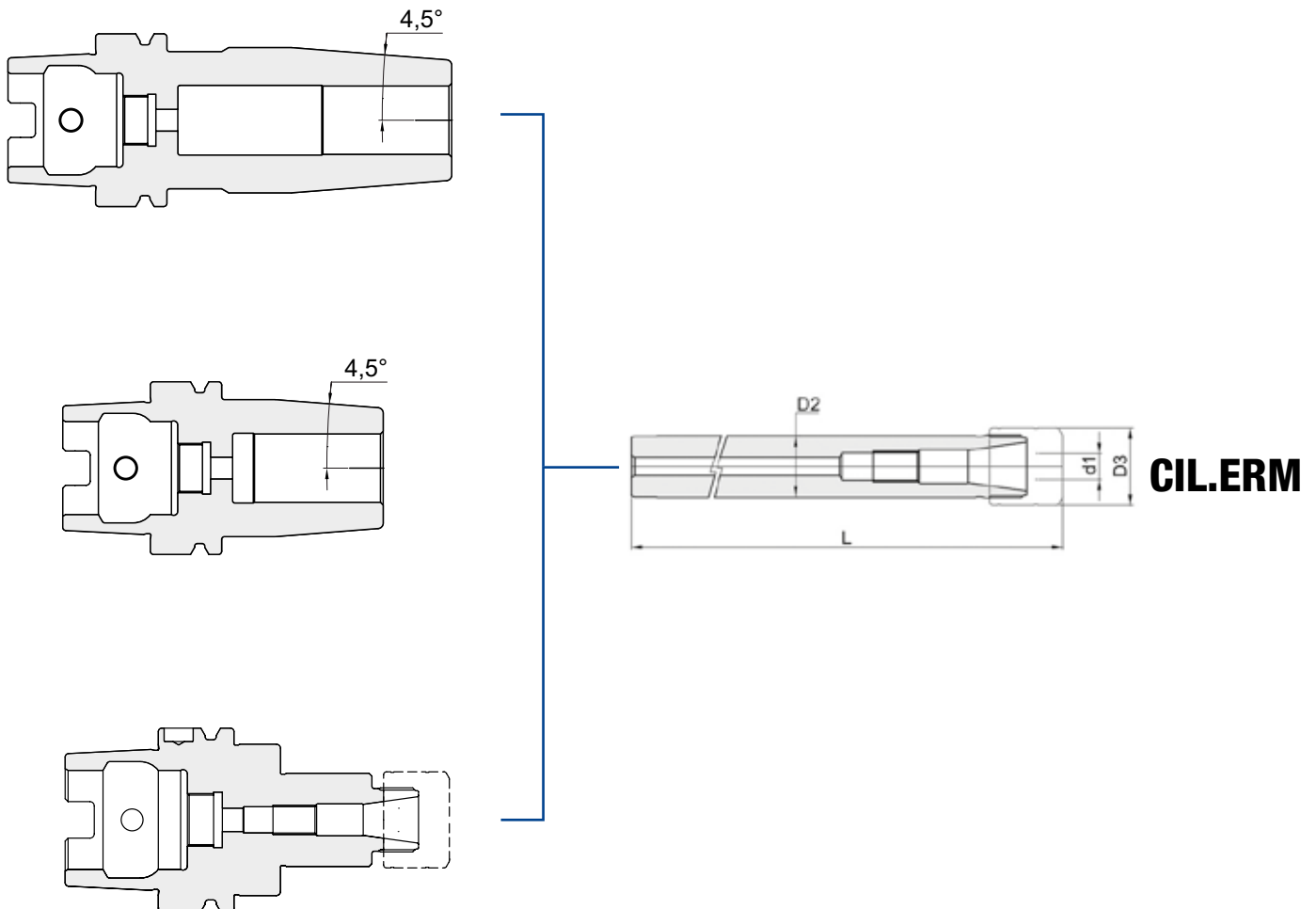
Prolunghe Extensions

Prolunga portapinze DIN 6499 con ghiera Mini (acciaio speciale per calettamento)

Extensions DIN 6499 with mini nuts (special steel shrinking)

Rallonges DIN 6499 avec mini écrous (en acier special)

Verlängerungen mit mini spannmutter DIN 6499 (spezieller stahl)



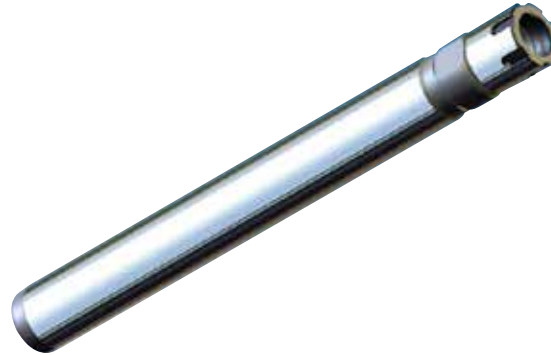
CIL ERM mini

Prolunga portapinze DIN 6499 con ghiera Mini (acciaio speciale per calettamento)

Extensions DIN 6499 with mini nuts (special steel shrinking)

Rallonges DIN 6499 avec mini ecrous (en acier special)

Verlängerungen mit mini spannmutter DIN 6499 (spezieller stahl)

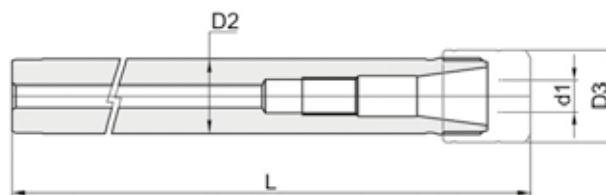


PROLUNGA PORTAPINZE DIN 6499 Acciaio speciale per calettamento termico

- Gambo cilindrico h6 utilizzabile anche con mandrini a calettamento termico
- Run Out 5 micron

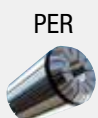
EXTENSION ER type Din 6499 Special steel shrinking

- Cylindrical shank h6 can be used even with shrink fit chucks
- Run Out 5 micron



CODICE-CODE	d1	L	D2 - H6	D3	Nuts/Ghiere
CIL.016.ERM11.160	01-07	160	16	16	RGM
CIL.020.ERM16.100	01-10	100	20	22	RGM
CIL.020.ERM16.200	01-10	200	20	22	RGM

Accessori | Accessories



p. 317



p. 344



ul. Dziewosłęby 14/1, 04-403 Warszawa
Tel: +48 22 673 55 48
info@stmech.pl www.stmech.pl

Ricambi | Spare parts



p. 338



p. 352