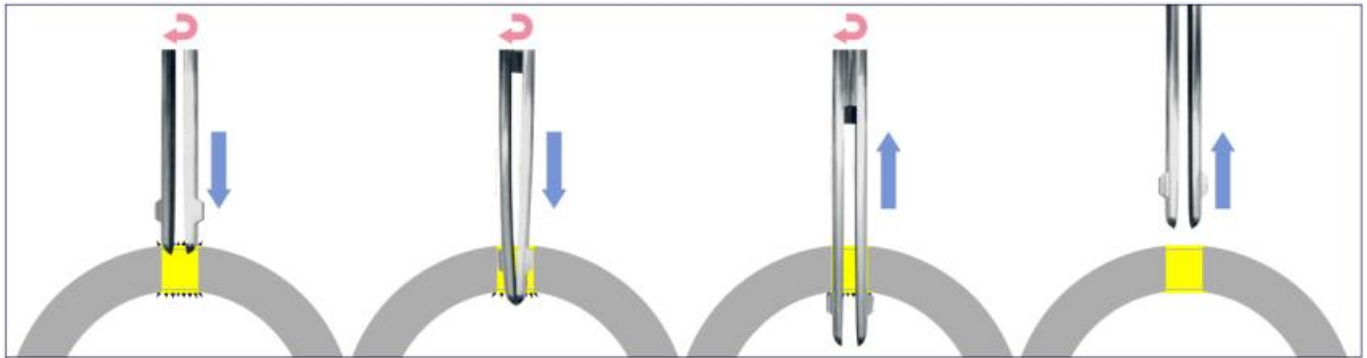


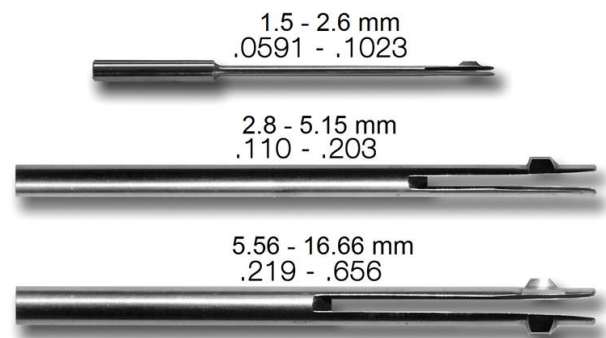
ELASTIC DEBURRING TOOL

*Deburring in one pass.
Works in both push and pull directions.
Simple and robust, solid construction.
Suitable for mass production.
Adaptable to any type of machine
From 1.5 to 16.6mm*



OPERATING SPEED

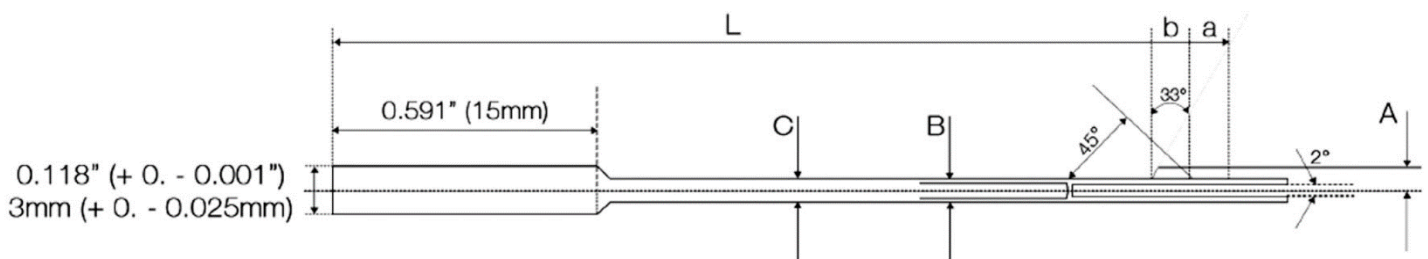
Hole Ø mm	Rotation rpm	Feed mm/rev
1.5 - 5	1500 - 1750	0.02 - 0.10
6 - 9	800 - 1000	0.02 - 0.15
10 +	600 - 650	0.05 - 0.20



BB-1.5 / BB-6 Single Cutting edge

BB-1.5 - BB-4
BB-5 - BB-6

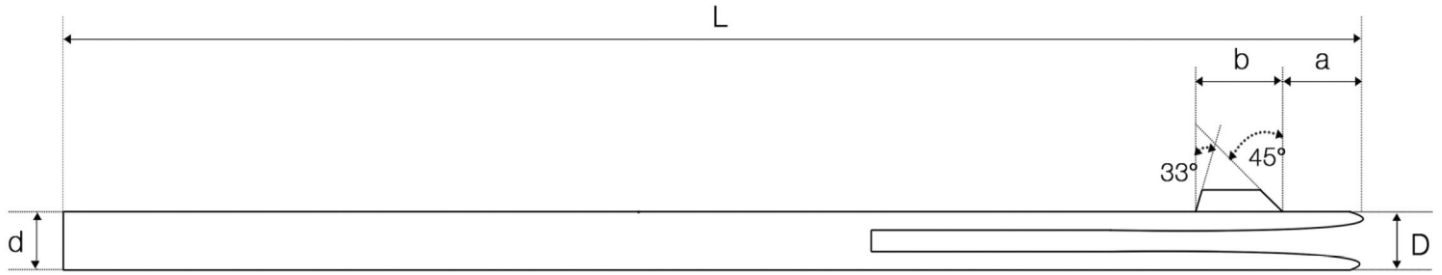
a=2mm (0.079") b=2.5mm (0.098")
a=2mm (0.079") b=3.0mm (0.118")



BB-1.5 - BB-4 a=2mm(0.079") b=2.5mm(0.098")
BB-1.5 - BB-4 a=2mm(0.079") b=3mm(0.118")

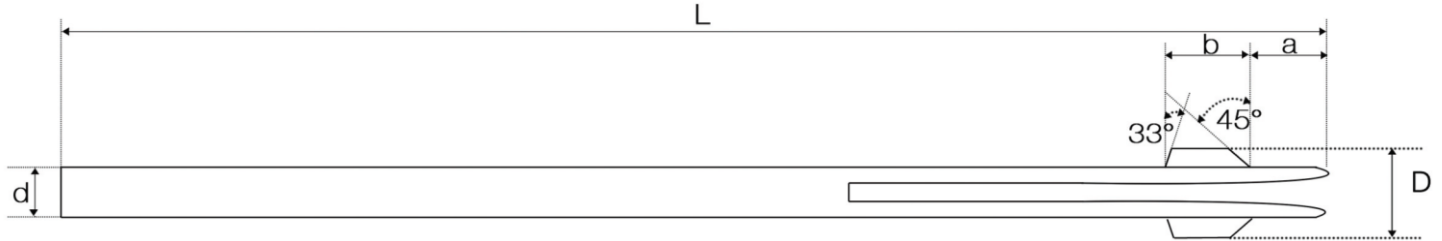
Tool	Working range		C - Stem diameter Tolerance +0/-0.1		L Total Length		A		B	
	Inches	mm	Inches	mm	inches	mm	inches	mm	inches	mm
BB-1.5	.0591-.0630	1.5-1.6	.055	1.4	1.97	50	.055	1.4	.019	0.5
BB-1.6	.0630-.0670	1.6-1.7	.059	1.5			.059	1.5		
BB-1.7	.0670-.0709	1.7-1.8	.063	1.6			.063	1.6		
BB-1.8	.0709-.0748	1.8-1.9	.067	1.7	2.36	60	.067	1.7		
BB-1.9	.0748-.0788	1.9-2.0	.071	1.8			.071	1.8		
BB-2	.0788-.0866	2.0-2.2	.075	1.9			.075	1.9		
BB-4	.0866-.0945	2.2-2.4	.083	2.1	3.15	80	.083	2.1	.039	1.0
BB-5	.0945-.1023	2.4-2.6	.091	2.3			.091	2.3		
BB-6	.1023-.1103	2.6-2.8	.098	2.5			.098	2.5		

BB-7 / BB-13 Single Cutting edge



Tool	Working range		d – Stem diameter Tolerance +0/-0.25		L Total length		a		b		D	
	inches	mm	Inches	mm	Inches	mm	inches	mm	inches	mm	inches	mm
BB-7	.110-.125	2.80-3.18	.108	2.75	4.00	101.6	.125	3.18	.175	4.45	.157	4.00
BB-8	.125-.140	3.18-3.55	.124	3.15							.171	4.34
BB-9	.140-.156	3.55-3.96	.141	3.58							.187	4.75
BB-10	.156-.172	3.96-4.36	.155	3.94							.218	5.54
BB-11	.172-.187	4.36-4.74	.171	4.34							.234	5.94
BB-12	.187-.203	4.74-5.15	.186	4.72							.250	6.35
BB-13	.203-.219	5.15-5.56	.202	5.13					.245	6.22	.670	6.78

BB-14 / BB-42 Double Cutting edge



Tool	Working range		d – Stem diameter Tolerance +0/-0.25		L Total length		a		b		D	
	inches	Mm	inches	mm	Inches	mm	inches	mm	inches	mm	inches	mm
BB-14	.219-.234	5.56-5.94	.218	5.54	4.00	101.6	.255	6.48	.245	6.22	.312	7.92
BB-15	.234-.250	5.94-6.35	.233	5.92							.328	8.33
BB-16	.250-.266	6.35-6.75	.249	6.32							.343	8.71
BB-17	.266-.281	6.75-7.13	.265	6.73							.359	9.12
BB-18	.281-.297	7.13-7.54	.280	7.11							.375	9.53
BB-19	.297-.313	7.54-7.95	.296	7.52							.390	9.91
BB-20	.313-.328	7.95-8.33	.312	7.92							.406	10.31
BB-21	.328-.343	8.33-8.71	.327	8.31							.422	10.72
BB-22	.343-.359	8.71-9.11	.342	8.69							.437	11.10
BB-23	.359-.375	9.11-9.52	.358	9.09							.453	11.51
BB-24	.375-.390	9.52-9.90	.374	9.50	4.43	112.7	.315	8.00	.245	6.22	.500	12.70
BB-25	.390-.406	9.90-10.31	.389	9.88							.515	13.08
BB-26	.406-.421	10.31-10.69	.405	10.29							.531	13.49
BB-27	.421-.437	10.69-11.10	.420	10.67							.547	13.89
BB-28	.437-.453	11.10-11.51	.436	11.07	5.50	139.7	.345	8.76	.275	6.99	.593	15.06
BB-29	.453-.468	11.51-11.88	.452	11.48							.609	15.47
BB-30	.468-.484	11.88-12.29	.472	11.86							.625	15.86
BB-31	.484-.500	12.29-12.70	.483	12.77							.640	16.26
BB-32	.500-.515	12.70-13.08	.499	12.67	7.00	177.8	.385	9.78	.305	7.75	.687	17.45
BB-33	.515-.531	13.08-13.49	.514	13.05							.703	17.86
BB-34	.531-.546	13.49-13.87	.530	13.46							.718	18.24
BB-35	.546-.563	13.87-14.30	.545	13.84							.734	18.64
BB-36	.563-.578	14.30-14.68	.562	14.27	7.50	190.5	.415	10.54	.405	10.29	.750	19.06
BB-37	.578-.594	14.68-15.09	.577	14.65							.765	19.43
BB-38	.594-.609	15.09-15.47	.593	15.06							.781	19.84
BB-39	.609-.625	15.47-15.87	.608	15.44							.796	20.22
BB-40	.625-.641	15.87-16.26	.624	15.84	8.37	212.6	.445	11.30	.435	11.05	.874	22.20
BB-41	.641-.656	16.26-16.66	.639	16.23							.891	22.63
BB-42	.656-.672	16.66-17.07	.655	16.64							.906	23.01